



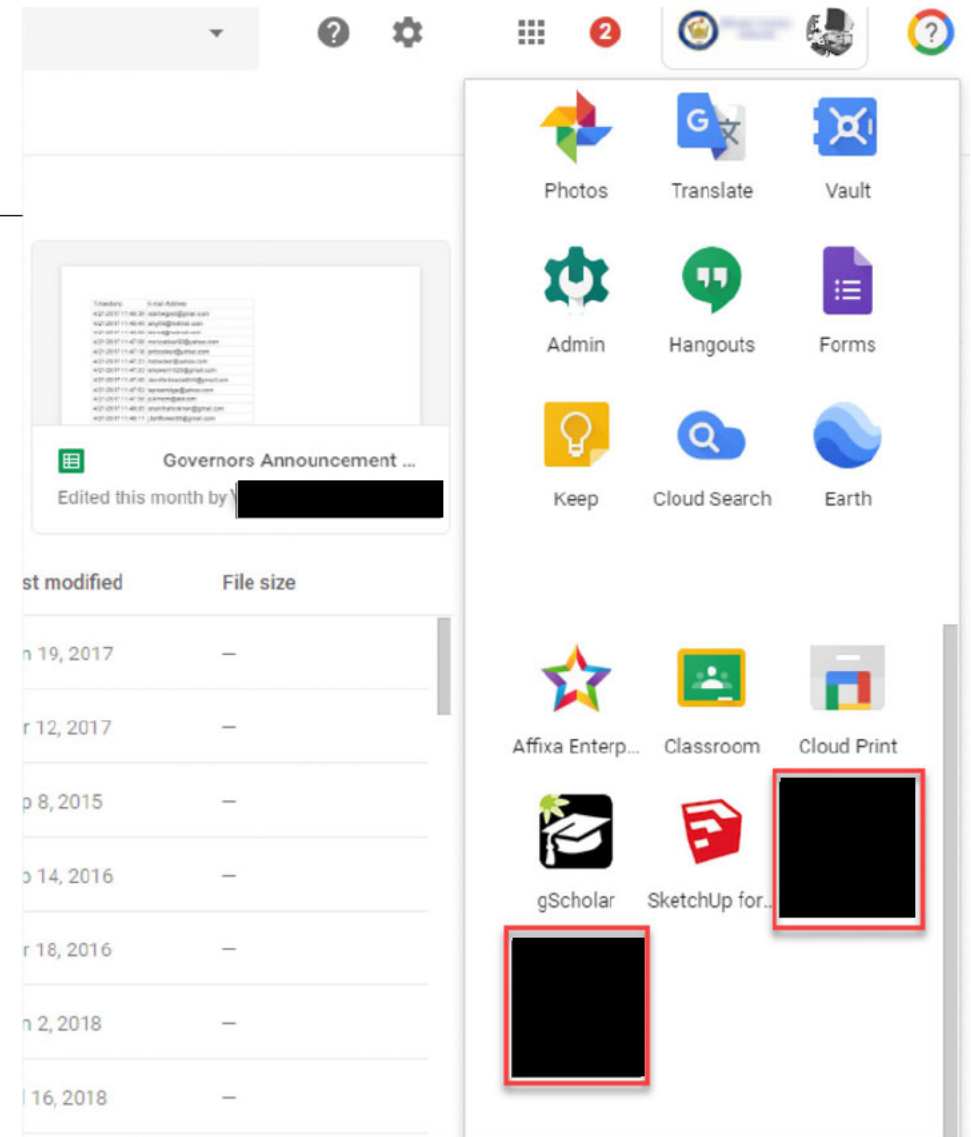
SSO & Rostering



What is SSO

- Single Sign On

- An authentication scheme that allows a user to log in with a single ID and password to any of several related, yet independent, software systems.
- True single sign-on allows the user to log in once and access services without re-entering authentication
- SSO portal will look different in every system.

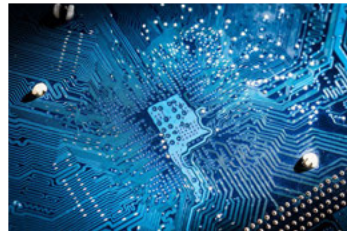


What is Rostering

- Rostering is a system that driven media gets data *from*, informing our system who should or should not be in the system.

- Rostering is the sharing of user data between two systems, making sure that data from the school's internal roster is automatically kept in sync with the user list in VJS.

- [REDACTED]



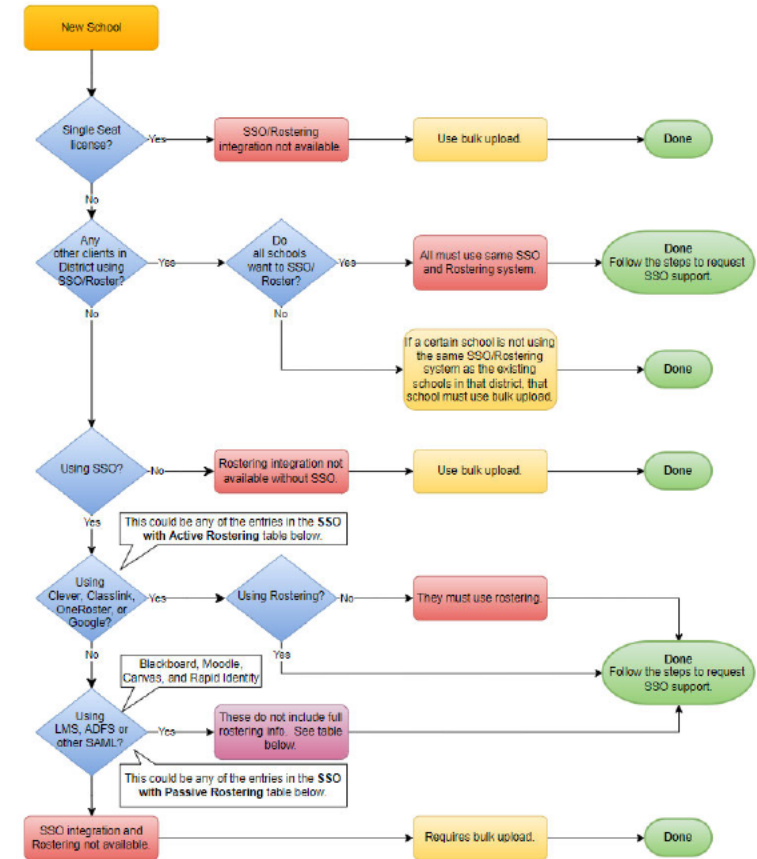
What is LTI

- LTI is used in Learning Management systems. It is a protocol sending data between platforms.
 - Canvas & Blackboard are examples of Learning Management systems.
- Dev Confluence has an entire section with [SSO/Rostering Instructions](#).



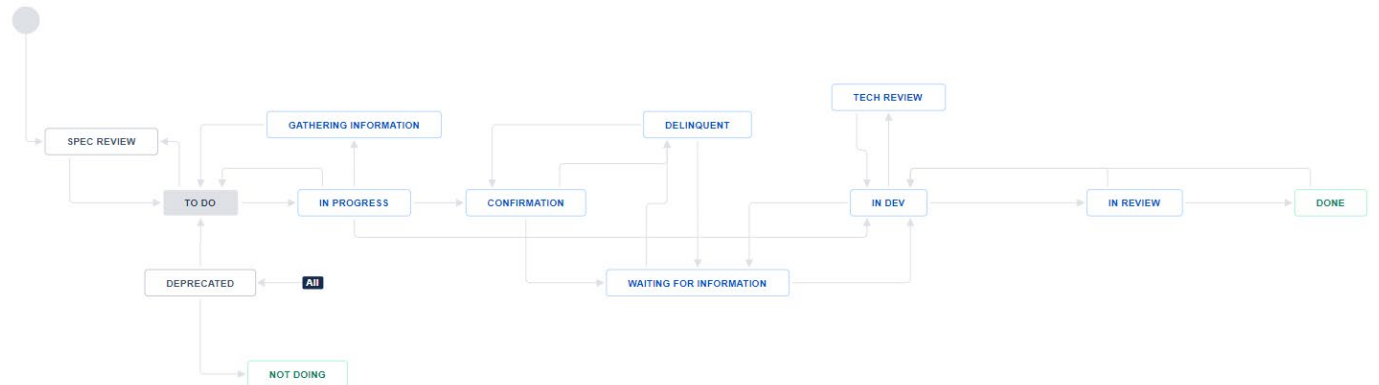
SSO Decision Tree

- Rostering is a system that driven media gets data *from*, informing our system who should or should not be in the system.
- Rostering is the sharing of user data between two systems, making sure that data from the school's internal roster is automatically kept in sync with the user list in VJS.
- [What is rostering and how to talk about it.](#)
 - This is an awesome page with a brilliant decision tree.



Requesting SSO WorkFlow

- When Submitting the SSOR form, there are a few things required to move forward.
- You must fill in the required fields, shown with the red star.
- [SSOR Form link \(must have Jira\)](#)
- [SSO & Rostering Workflow](#)



Favorite SSOR Systems

Best for Implementation and support

- Clever (far and above the best)
- ClassLink
- Canvas

Harder to implement and support

- Google,
- ADFS SAML,
- Hybrid





Related Links

Links

- [SSO / Rostering Instructions](#) from the Dev Confluence space
 - [Initial Communication Steps with Customer](#)
 - [SSO & Rostering - for CS/AM](#)
- [SSO & how to talk about it](#)
- [Data Integration & User Access](#)



OUR MISSION

To inspire individuals to know that there is no limit to what they can become or achieve in life.

